

Acta Crystallographica Section E

Structure Reports

Online

ISSN 1600-5368

***N*-(2,3-Dimethylphenyl)-2,4-dimethylbenzenesulfonamide**P. G. Nirmala,^a B. Thimme Gowda,^{a*} Sabine Foro^b and Hartmut Fuess^b^aDepartment of Chemistry, Mangalore University, Mangalagangothri 574 199, Mangalore, India, and ^bInstitute of Materials Science, Darmstadt University of Technology, Petersenstrasse 23, D-64287 Darmstadt, Germany

Correspondence e-mail: gowdabt@yahoo.com

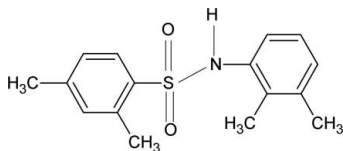
Received 27 March 2010; accepted 28 March 2010

Key indicators: single-crystal X-ray study; $T = 299$ K; mean $\sigma(\text{C}-\text{C}) = 0.004$ Å; R factor = 0.058; wR factor = 0.161; data-to-parameter ratio = 16.4.

The asymmetric unit of the title compound, $\text{C}_{16}\text{H}_{19}\text{NO}_2\text{S}$, contains two independent molecules: the dihedral angles between the sulfonyl and anilino benzene rings in the two molecules are $41.5(1)$ and $43.8(1)^\circ$. The independent molecules are linked into a dimer by a pair of intermolecular $\text{N}-\text{H}\cdots\text{O}$ hydrogen bonds.

Related literature

For the preparation of the title compound, see: Savitha & Gowda (2006). For our studies of the effect of substituents on the structures of *N*-(aryl)arylsulfonamides, see: Gowda *et al.* (2009*a,b,c*). For related structures, see: Gelbrich *et al.* (2007); Perlovich *et al.* (2006).



Experimental

Crystal data

$\text{C}_{16}\text{H}_{19}\text{NO}_2\text{S}$
 $M_r = 289.38$
 Triclinic, $P\bar{1}$
 $a = 8.3643(7)$ Å
 $b = 10.975(1)$ Å

$c = 16.996(2)$ Å
 $\alpha = 83.034(9)^\circ$
 $\beta = 80.100(7)^\circ$
 $\gamma = 81.796(9)^\circ$
 $V = 1513.7(3)$ Å³

$Z = 4$
 Mo $K\alpha$ radiation
 $\mu = 0.22$ mm⁻¹

$T = 299$ K
 $0.34 \times 0.30 \times 0.20$ mm

Data collection

Oxford Diffraction Xcalibur diffractometer with a Sapphire CCD detector
 Absorption correction: multi-scan (*CrysAlis RED*; Oxford)

Diffraction, 2009)
 $T_{\min} = 0.931$, $T_{\max} = 0.958$
 11164 measured reflections
 6136 independent reflections
 4196 reflections with $I > 2\sigma(I)$
 $R_{\text{int}} = 0.016$

Refinement

$R[F^2 > 2\sigma(F^2)] = 0.058$
 $wR(F^2) = 0.161$
 $S = 1.03$
 6136 reflections
 375 parameters

H atoms treated by a mixture of independent and constrained refinement
 $\Delta\rho_{\max} = 0.66$ e Å⁻³
 $\Delta\rho_{\min} = -0.41$ e Å⁻³

Table 1

Hydrogen-bond geometry (Å, °).

$D-H\cdots A$	$D-H$	$H\cdots A$	$D\cdots A$	$D-H\cdots A$
$\text{N1}-\text{H1N}\cdots\text{O3}$	0.83 (3)	2.15 (3)	2.952 (3)	161 (3)
$\text{N2}-\text{H2N}\cdots\text{O1}$	0.79 (3)	2.22 (3)	2.982 (3)	164 (3)

Data collection: *CrysAlis CCD* (Oxford Diffraction, 2009); cell refinement: *CrysAlis RED* (Oxford Diffraction, 2009); data reduction: *CrysAlis RED*; program(s) used to solve structure: *SHELXS97* (Sheldrick, 2008); program(s) used to refine structure: *SHELXL97* (Sheldrick, 2008); molecular graphics: *PLATON* (Spek, 2009); software used to prepare material for publication: *SHELXL97*.

Supplementary data and figures for this paper are available from the IUCr electronic archives (Reference: CI5070).

References

- Gelbrich, T., Hursthouse, M. B. & Threlfall, T. L. (2007). *Acta Cryst.* **B63**, 621–632.
 Gowda, B. T., Foro, S., Babitha, K. S. & Fuess, H. (2009*a*). *Acta Cryst.* **E65**, o366.
 Gowda, B. T., Foro, S., Nirmala, P. G., Babitha, K. S. & Fuess, H. (2009*b*). *Acta Cryst.* **E65**, o576.
 Gowda, B. T., Foro, S., Nirmala, P. G. & Fuess, H. (2009*c*). *Acta Cryst.* **E65**, o3275.
 Oxford Diffraction (2009). *CrysAlis CCD* and *CrysAlis RED*. Oxford Diffraction Ltd, Yarnton, England.
 Perlovich, G. L., Tkachev, V. V., Schaper, K.-J. & Raevsky, O. A. (2006). *Acta Cryst.* **E62**, o780–o782.
 Savitha, M. B. & Gowda, B. T. (2006). *Z. Naturforsch. Teil A*, **60**, 600–606.
 Sheldrick, G. M. (2008). *Acta Cryst.* **A64**, 112–122.
 Spek, A. L. (2009). *Acta Cryst.* **D65**, 148–155.

supplementary materials

Acta Cryst. (2010). E66, o1017 [doi:10.1107/S1600536810011669]

***N*-(2,3-Dimethylphenyl)-2,4-dimethylbenzenesulfonamide**

P. G. Nirmala, B. T. Gowda, S. Foro and H. Fuess

Comment

As part of a study of substituent effects on the structures of *N*-(aryl)arylsulfonamides (Gowda *et al.*, 2009*a,b,c*), in the present work, the structure of 2,4-dimethyl-*N*-(2,3-dimethylphenyl)benzenesulfonamide (I) has been determined (Fig. 1). The asymmetric unit contains two independent molecules. Both molecules are bent at the *N*-atoms with C—SO₂—NH—C torsion angles of 70.1 (2) and -66.0 (2)°, compared to the values of 53.9 (2)° in 2,4-dimethyl-*N*-(3,5-dimethylphenyl)benzenesulfonamide (II) (Gowda *et al.*, 2009*c*), 71.0 (2)° in *N*-(2,3-dimethylphenyl)benzenesulfonamide (III) (Gowda *et al.*, 2009*a*), and 46.1 (3)° (glide image of molecule 1) and 47.7 (3)° (molecule 2) in the two independent molecules of 2,4-dimethyl-*N*-(phenyl)benzenesulfonamide (IV) (Gowda *et al.*, 2009*b*).

The sulfonyl and anilino benzene rings in the two molecules of (I) are tilted relative to each other by 41.5 (1) and 43.8 (1)° in (I), compared to the values of 82.1 (1)° in (II), 64.8 (1)° in (III), and 67.5 (1)° (molecule 1) and 72.9 (1)° (molecule 2) in the two independent molecules of (IV). The remaining bond parameters in (I) are similar to those observed in (II), (III), (IV) and other aryl sulfonamides (Perlovich *et al.*, 2006; Gelbrich *et al.*, 2007).

In the crystal structure, pairs of intermolecular N—H···O hydrogen bonds (Table 1) link the independent molecules to form dimers as shown in Fig. 1 and Fig.2.

Experimental

The solution of *m*-xylene (10 ml) in chloroform (40 ml) was treated dropwise with chlorosulfonic acid (25 ml) at 273 K. After the initial evolution of hydrogen chloride subsided, the reaction mixture was brought to room temperature and poured into crushed ice in a beaker. The chloroform layer was separated, washed with cold water and allowed to evaporate slowly. The residual 2,4-dimethylbenzenesulfonylchloride was treated with a stoichiometric amount of 2,3-dimethylaniline and boiled for 10 min. The reaction mixture was then cooled to room temperature and added to ice cold water (100 ml). The resultant solid 2,4-dimethyl-*N*-(2,3-dimethylphenyl)benzenesulfonamide was filtered under suction and washed thoroughly with cold water. It was then recrystallized to constant melting point from dilute ethanol. The purity of the compound was checked and characterized by recording its infrared and NMR spectra (Savitha & Gowda, 2006). The single crystals used in X-ray diffraction studies were grown in ethanolic solution by slow evaporation at room temperature.

Refinement

H atoms of the NH groups were located in a difference map and their positional parameters were refined [N—H = 0.79 (3)–0.83 (3) Å]. The other H atoms were positioned with idealized geometry using a riding model with C—H = 0.93–0.96 Å. All H atoms were refined with isotropic displacement parameters (set to 1.2 times of the U_{eq} of the parent atom).

Figures

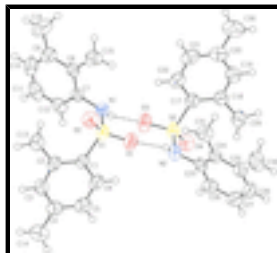


Fig. 1. The two independent molecules of (I), showing the atom labelling scheme. Displacement ellipsoids are drawn at the 50% probability level. Dashed lines indicate hydrogen bonds.

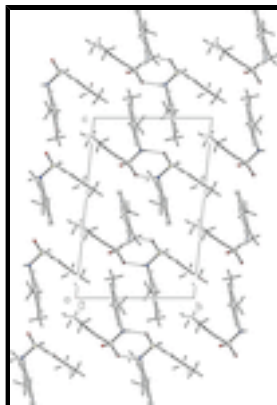


Fig. 2. Molecular packing of (I) with hydrogen bonding shown as dashed lines.

N-(2,3-Dimethylphenyl)-2,4-dimethylbenzenesulfonamide

Crystal data

$C_{16}H_{19}NO_2S$

$M_r = 289.38$

Triclinic, $P\bar{1}$

Hall symbol: -P 1

$a = 8.3643$ (7) Å

$b = 10.975$ (1) Å

$c = 16.996$ (2) Å

$\alpha = 83.034$ (9)°

$\beta = 80.100$ (7)°

$\gamma = 81.796$ (9)°

$V = 1513.7$ (3) Å³

$Z = 4$

$F(000) = 616$

$D_x = 1.270$ Mg m⁻³

Mo $K\alpha$ radiation, $\lambda = 0.71073$ Å

Cell parameters from 3007 reflections

$\theta = 2.5$ – 28.0 °

$\mu = 0.22$ mm⁻¹

$T = 299$ K

Prism, yellow

$0.34 \times 0.30 \times 0.20$ mm

Data collection

Oxford Diffraction Xcalibur diffractometer with a Sapphire CCD detector

6136 independent reflections

Radiation source: fine-focus sealed tube graphite

4196 reflections with $I > 2\sigma(I)$

$R_{int} = 0.016$

Rotation method data acquisition using ω and φ scans $\theta_{max} = 26.4$ °, $\theta_{min} = 2.5$ °

Absorption correction: multi-scan (CrysAlis RED; Oxford Diffraction, 2009)

$h = -10 \rightarrow 10$

$T_{\min} = 0.931$, $T_{\max} = 0.958$
11164 measured reflections

$k = -13 \rightarrow 13$
 $l = -21 \rightarrow 21$

Refinement

Refinement on F^2

Least-squares matrix: full

$R[F^2 > 2\sigma(F^2)] = 0.058$

$wR(F^2) = 0.161$

$S = 1.03$

6136 reflections

375 parameters

0 restraints

Primary atom site location: structure-invariant direct methods

Secondary atom site location: difference Fourier map

Hydrogen site location: inferred from neighbouring sites

H atoms treated by a mixture of independent and constrained refinement

$w = 1/[\sigma^2(F_o^2) + (0.0699P)^2 + 0.9151P]$

where $P = (F_o^2 + 2F_c^2)/3$

$(\Delta/\sigma)_{\max} = 0.002$

$\Delta\rho_{\max} = 0.66 \text{ e } \text{\AA}^{-3}$

$\Delta\rho_{\min} = -0.41 \text{ e } \text{\AA}^{-3}$

Special details

Geometry. All esds (except the esd in the dihedral angle between two l.s. planes) are estimated using the full covariance matrix. The cell esds are taken into account individually in the estimation of esds in distances, angles and torsion angles; correlations between esds in cell parameters are only used when they are defined by crystal symmetry. An approximate (isotropic) treatment of cell esds is used for estimating esds involving l.s. planes.

Refinement. Refinement of F^2 against ALL reflections. The weighted R -factor wR and goodness of fit S are based on F^2 , conventional R -factors R are based on F , with F set to zero for negative F^2 . The threshold expression of $F^2 > \sigma(F^2)$ is used only for calculating R -factors(gt) etc. and is not relevant to the choice of reflections for refinement. R -factors based on F^2 are statistically about twice as large as those based on F , and R -factors based on ALL data will be even larger.

Fractional atomic coordinates and isotropic or equivalent isotropic displacement parameters (\AA^2)

	x	y	z	$U_{\text{iso}}^*/U_{\text{eq}}$
C1	0.7579 (3)	0.1917 (2)	0.30498 (15)	0.0439 (6)
C2	0.8079 (3)	0.0826 (2)	0.35144 (17)	0.0487 (6)
C3	0.6896 (4)	0.0046 (3)	0.38031 (18)	0.0559 (7)
H3	0.7200	-0.0685	0.4110	0.067*
C4	0.5295 (4)	0.0283 (3)	0.36652 (18)	0.0548 (7)
C5	0.4848 (4)	0.1366 (3)	0.32071 (19)	0.0582 (8)
H5	0.3781	0.1550	0.3101	0.070*
C6	0.5965 (3)	0.2167 (3)	0.29087 (18)	0.0532 (7)
H6	0.5642	0.2895	0.2605	0.064*
C7	0.9403 (3)	0.3704 (2)	0.40309 (15)	0.0405 (6)
C8	1.1020 (3)	0.3881 (2)	0.40397 (16)	0.0431 (6)
C9	1.1659 (4)	0.3549 (3)	0.47568 (18)	0.0532 (7)
C10	1.0649 (5)	0.3099 (3)	0.54282 (18)	0.0649 (9)
H10	1.1067	0.2888	0.5906	0.078*
C11	0.9048 (5)	0.2950 (3)	0.54161 (19)	0.0664 (9)

supplementary materials

H11	0.8397	0.2652	0.5880	0.080*
C12	0.8422 (4)	0.3247 (3)	0.47111 (18)	0.0545 (7)
H12	0.7346	0.3142	0.4692	0.065*
C13	0.9783 (4)	0.0452 (3)	0.3710 (2)	0.0703 (9)
H13A	1.0148	0.1136	0.3902	0.084*
H13B	1.0510	0.0220	0.3235	0.084*
H13C	0.9778	-0.0236	0.4116	0.084*
C14	0.4087 (4)	-0.0607 (3)	0.4010 (2)	0.0770 (10)
H14A	0.4628	-0.1313	0.4293	0.092*
H14B	0.3640	-0.0869	0.3584	0.092*
H14C	0.3221	-0.0206	0.4374	0.092*
C15	1.2017 (4)	0.4467 (3)	0.33078 (19)	0.0594 (8)
H15A	1.1299	0.4970	0.2980	0.071*
H15B	1.2662	0.3833	0.3007	0.071*
H15C	1.2725	0.4973	0.3469	0.071*
C16	1.3387 (4)	0.3701 (4)	0.4809 (2)	0.0815 (11)
H16A	1.3584	0.4534	0.4616	0.098*
H16B	1.4123	0.3136	0.4486	0.098*
H16C	1.3563	0.3531	0.5357	0.098*
N1	0.8735 (3)	0.4042 (2)	0.32974 (14)	0.0487 (6)
H1N	0.783 (4)	0.447 (3)	0.3348 (18)	0.058*
O1	0.8196 (3)	0.37379 (19)	0.19753 (12)	0.0638 (6)
O2	1.0524 (2)	0.24770 (19)	0.25134 (12)	0.0596 (5)
S1	0.88758 (9)	0.30509 (6)	0.26408 (4)	0.0484 (2)
C17	0.6666 (3)	0.7822 (2)	0.21219 (16)	0.0459 (6)
C18	0.6232 (3)	0.8894 (2)	0.16309 (18)	0.0503 (7)
C19	0.7455 (4)	0.9638 (3)	0.1334 (2)	0.0621 (8)
H19	0.7199	1.0352	0.1002	0.075*
C20	0.9028 (4)	0.9375 (3)	0.1505 (2)	0.0621 (8)
C21	0.9409 (4)	0.8305 (3)	0.1997 (2)	0.0644 (9)
H21	1.0461	0.8107	0.2122	0.077*
C22	0.8243 (4)	0.7539 (3)	0.22987 (18)	0.0552 (7)
H22	0.8512	0.6821	0.2625	0.066*
C23	0.4896 (3)	0.6176 (2)	0.10779 (15)	0.0403 (6)
C24	0.6025 (3)	0.6394 (2)	0.03794 (16)	0.0427 (6)
C25	0.5393 (4)	0.6793 (2)	-0.03382 (17)	0.0523 (7)
C26	0.3736 (4)	0.6952 (3)	-0.0335 (2)	0.0615 (8)
H26	0.3337	0.7213	-0.0813	0.074*
C27	0.2650 (4)	0.6736 (3)	0.0354 (2)	0.0628 (8)
H27	0.1531	0.6862	0.0342	0.075*
C28	0.3231 (3)	0.6332 (3)	0.10660 (18)	0.0526 (7)
H28	0.2506	0.6166	0.1534	0.063*
C29	0.4565 (4)	0.9307 (3)	0.1406 (2)	0.0710 (10)
H29A	0.3803	0.9503	0.1878	0.085*
H29B	0.4219	0.8656	0.1172	0.085*
H29C	0.4609	1.0028	0.1026	0.085*
C30	1.0290 (5)	1.0232 (4)	0.1153 (3)	0.0918 (12)
H30A	1.0768	1.0470	0.1577	0.110*
H30B	0.9775	1.0955	0.0875	0.110*

H30C	1.1128	0.9813	0.0784	0.110*
C31	0.7824 (3)	0.6221 (3)	0.03934 (18)	0.0588 (8)
H31A	0.8049	0.5729	0.0878	0.071*
H31B	0.8197	0.7014	0.0373	0.071*
H31C	0.8382	0.5810	-0.0062	0.071*
C32	0.6546 (5)	0.7030 (3)	-0.11119 (19)	0.0778 (10)
H32A	0.7213	0.6273	-0.1243	0.093*
H32B	0.7232	0.7631	-0.1049	0.093*
H32C	0.5925	0.7337	-0.1536	0.093*
N2	0.5434 (3)	0.5754 (2)	0.18338 (14)	0.0469 (5)
H2N	0.627 (4)	0.532 (3)	0.1814 (18)	0.056*
O3	0.5930 (3)	0.59831 (19)	0.31781 (12)	0.0651 (6)
O4	0.3674 (2)	0.73252 (18)	0.26308 (12)	0.0575 (5)
S2	0.53042 (9)	0.67152 (6)	0.25099 (4)	0.0487 (2)

Atomic displacement parameters (\AA^2)

	U^{11}	U^{22}	U^{33}	U^{12}	U^{13}	U^{23}
C1	0.0468 (15)	0.0455 (14)	0.0409 (15)	0.0010 (11)	-0.0121 (11)	-0.0104 (12)
C2	0.0506 (16)	0.0447 (14)	0.0516 (16)	0.0046 (12)	-0.0169 (13)	-0.0076 (12)
C3	0.0653 (19)	0.0428 (15)	0.0594 (19)	-0.0036 (13)	-0.0149 (15)	-0.0011 (13)
C4	0.0581 (18)	0.0546 (16)	0.0546 (18)	-0.0077 (14)	-0.0093 (14)	-0.0154 (14)
C5	0.0461 (16)	0.0651 (18)	0.066 (2)	-0.0035 (14)	-0.0159 (14)	-0.0128 (16)
C6	0.0520 (16)	0.0534 (16)	0.0555 (18)	0.0040 (13)	-0.0212 (13)	-0.0045 (13)
C7	0.0483 (15)	0.0314 (12)	0.0427 (14)	-0.0057 (10)	-0.0086 (11)	-0.0037 (10)
C8	0.0499 (15)	0.0370 (13)	0.0423 (15)	-0.0060 (11)	-0.0057 (11)	-0.0051 (11)
C9	0.0568 (17)	0.0502 (15)	0.0555 (18)	0.0025 (13)	-0.0174 (14)	-0.0156 (14)
C10	0.100 (3)	0.0516 (17)	0.0416 (17)	0.0086 (17)	-0.0207 (17)	-0.0049 (14)
C11	0.096 (3)	0.0519 (17)	0.0432 (18)	-0.0120 (17)	0.0093 (16)	0.0029 (14)
C12	0.0590 (18)	0.0488 (15)	0.0526 (18)	-0.0138 (13)	0.0055 (13)	-0.0047 (13)
C13	0.061 (2)	0.0565 (18)	0.094 (3)	0.0012 (15)	-0.0319 (18)	0.0124 (17)
C14	0.073 (2)	0.077 (2)	0.086 (3)	-0.0253 (18)	-0.0081 (19)	-0.010 (2)
C15	0.0515 (17)	0.0656 (18)	0.0616 (19)	-0.0195 (14)	-0.0001 (14)	-0.0060 (15)
C16	0.065 (2)	0.099 (3)	0.089 (3)	0.0086 (19)	-0.0332 (19)	-0.036 (2)
N1	0.0485 (13)	0.0439 (12)	0.0538 (14)	0.0008 (10)	-0.0144 (11)	-0.0041 (11)
O1	0.0778 (14)	0.0661 (13)	0.0476 (12)	-0.0039 (11)	-0.0223 (10)	0.0064 (10)
O2	0.0529 (12)	0.0671 (13)	0.0570 (13)	-0.0047 (10)	-0.0030 (9)	-0.0103 (10)
S1	0.0531 (4)	0.0499 (4)	0.0421 (4)	-0.0027 (3)	-0.0118 (3)	-0.0021 (3)
C17	0.0507 (16)	0.0436 (14)	0.0448 (15)	-0.0017 (12)	-0.0113 (12)	-0.0093 (12)
C18	0.0495 (16)	0.0418 (14)	0.0612 (18)	-0.0015 (12)	-0.0141 (13)	-0.0090 (13)
C19	0.064 (2)	0.0461 (16)	0.078 (2)	-0.0048 (14)	-0.0169 (16)	-0.0052 (15)
C20	0.0514 (18)	0.0637 (19)	0.075 (2)	-0.0111 (14)	-0.0056 (15)	-0.0245 (17)
C21	0.0495 (17)	0.074 (2)	0.075 (2)	0.0061 (15)	-0.0213 (16)	-0.0271 (18)
C22	0.0545 (17)	0.0564 (17)	0.0567 (18)	0.0027 (14)	-0.0185 (14)	-0.0110 (14)
C23	0.0491 (15)	0.0332 (12)	0.0379 (14)	-0.0036 (10)	-0.0058 (11)	-0.0042 (10)
C24	0.0499 (15)	0.0365 (12)	0.0429 (15)	-0.0088 (11)	-0.0066 (11)	-0.0058 (11)
C25	0.073 (2)	0.0433 (14)	0.0434 (16)	-0.0117 (13)	-0.0124 (14)	-0.0041 (12)
C26	0.080 (2)	0.0523 (17)	0.058 (2)	-0.0022 (15)	-0.0328 (17)	-0.0041 (14)

supplementary materials

C27	0.0535 (18)	0.0624 (19)	0.079 (2)	-0.0035 (14)	-0.0242 (17)	-0.0161 (17)
C28	0.0459 (16)	0.0538 (16)	0.0580 (18)	-0.0101 (12)	-0.0029 (13)	-0.0086 (14)
C29	0.0588 (19)	0.0538 (18)	0.100 (3)	-0.0028 (15)	-0.0298 (18)	0.0126 (18)
C30	0.067 (2)	0.090 (3)	0.124 (4)	-0.025 (2)	-0.008 (2)	-0.024 (2)
C31	0.0499 (17)	0.0703 (19)	0.0556 (18)	-0.0144 (14)	0.0005 (13)	-0.0076 (15)
C32	0.109 (3)	0.077 (2)	0.0454 (19)	-0.022 (2)	-0.0035 (18)	0.0044 (17)
N2	0.0525 (14)	0.0437 (12)	0.0413 (13)	-0.0003 (10)	-0.0061 (11)	-0.0001 (10)
O3	0.0854 (15)	0.0675 (13)	0.0381 (11)	0.0013 (11)	-0.0128 (10)	0.0030 (10)
O4	0.0536 (12)	0.0617 (12)	0.0523 (12)	-0.0006 (9)	0.0027 (9)	-0.0089 (10)
S2	0.0574 (4)	0.0501 (4)	0.0362 (4)	-0.0020 (3)	-0.0062 (3)	-0.0025 (3)

Geometric parameters (Å, °)

C1—C6	1.395 (4)	C17—C22	1.386 (4)
C1—C2	1.405 (4)	C17—C18	1.399 (4)
C1—S1	1.768 (3)	C17—S2	1.775 (3)
C2—C3	1.387 (4)	C18—C19	1.389 (4)
C2—C13	1.508 (4)	C18—C29	1.501 (4)
C3—C4	1.382 (4)	C19—C20	1.379 (4)
C3—H3	0.93	C19—H19	0.93
C4—C5	1.381 (4)	C20—C21	1.388 (4)
C4—C14	1.502 (4)	C20—C30	1.512 (5)
C5—C6	1.366 (4)	C21—C22	1.371 (4)
C5—H5	0.93	C21—H21	0.93
C6—H6	0.93	C22—H22	0.93
C7—C12	1.383 (4)	C23—C28	1.382 (4)
C7—C8	1.397 (3)	C23—C24	1.403 (4)
C7—N1	1.440 (3)	C23—N2	1.437 (3)
C8—C9	1.402 (4)	C24—C25	1.409 (4)
C8—C15	1.503 (4)	C24—C31	1.493 (4)
C9—C10	1.382 (4)	C25—C26	1.372 (4)
C9—C16	1.497 (4)	C25—C32	1.509 (4)
C10—C11	1.376 (5)	C26—C27	1.371 (5)
C10—H10	0.93	C26—H26	0.93
C11—C12	1.374 (4)	C27—C28	1.381 (4)
C11—H11	0.93	C27—H27	0.93
C12—H12	0.93	C28—H28	0.93
C13—H13A	0.96	C29—H29A	0.96
C13—H13B	0.96	C29—H29B	0.96
C13—H13C	0.96	C29—H29C	0.96
C14—H14A	0.96	C30—H30A	0.96
C14—H14B	0.96	C30—H30B	0.96
C14—H14C	0.96	C30—H30C	0.96
C15—H15A	0.96	C31—H31A	0.96
C15—H15B	0.96	C31—H31B	0.96
C15—H15C	0.96	C31—H31C	0.96
C16—H16A	0.96	C32—H32A	0.96
C16—H16B	0.96	C32—H32B	0.96
C16—H16C	0.96	C32—H32C	0.96

N1—S1	1.630 (2)	N2—S2	1.632 (2)
N1—H1N	0.83 (3)	N2—H2N	0.79 (3)
O1—S1	1.436 (2)	O3—S2	1.439 (2)
O2—S1	1.424 (2)	O4—S2	1.423 (2)
C6—C1—C2	119.8 (3)	C22—C17—C18	120.8 (3)
C6—C1—S1	116.4 (2)	C22—C17—S2	116.1 (2)
C2—C1—S1	123.8 (2)	C18—C17—S2	123.0 (2)
C3—C2—C1	116.4 (2)	C19—C18—C17	116.6 (3)
C3—C2—C13	118.8 (3)	C19—C18—C29	117.8 (3)
C1—C2—C13	124.8 (3)	C17—C18—C29	125.7 (3)
C4—C3—C2	124.3 (3)	C20—C19—C18	123.6 (3)
C4—C3—H3	117.9	C20—C19—H19	118.2
C2—C3—H3	117.9	C18—C19—H19	118.2
C5—C4—C3	117.7 (3)	C19—C20—C21	118.1 (3)
C5—C4—C14	121.5 (3)	C19—C20—C30	120.2 (3)
C3—C4—C14	120.8 (3)	C21—C20—C30	121.7 (3)
C6—C5—C4	120.3 (3)	C22—C21—C20	120.3 (3)
C6—C5—H5	119.8	C22—C21—H21	119.8
C4—C5—H5	119.8	C20—C21—H21	119.8
C5—C6—C1	121.5 (3)	C21—C22—C17	120.7 (3)
C5—C6—H6	119.3	C21—C22—H22	119.7
C1—C6—H6	119.3	C17—C22—H22	119.7
C12—C7—C8	121.8 (3)	C28—C23—C24	121.7 (2)
C12—C7—N1	119.5 (2)	C28—C23—N2	117.3 (2)
C8—C7—N1	118.7 (2)	C24—C23—N2	120.9 (2)
C7—C8—C9	118.3 (2)	C23—C24—C25	117.3 (2)
C7—C8—C15	120.5 (2)	C23—C24—C31	121.6 (2)
C9—C8—C15	121.1 (3)	C25—C24—C31	121.1 (3)
C10—C9—C8	118.7 (3)	C26—C25—C24	120.0 (3)
C10—C9—C16	120.1 (3)	C26—C25—C32	120.1 (3)
C8—C9—C16	121.2 (3)	C24—C25—C32	119.8 (3)
C11—C10—C9	122.5 (3)	C25—C26—C27	121.9 (3)
C11—C10—H10	118.8	C25—C26—H26	119.1
C9—C10—H10	118.8	C27—C26—H26	119.1
C12—C11—C10	119.2 (3)	C26—C27—C28	119.5 (3)
C12—C11—H11	120.4	C26—C27—H27	120.2
C10—C11—H11	120.4	C28—C27—H27	120.2
C11—C12—C7	119.5 (3)	C27—C28—C23	119.6 (3)
C11—C12—H12	120.2	C27—C28—H28	120.2
C7—C12—H12	120.2	C23—C28—H28	120.2
C2—C13—H13A	109.5	C18—C29—H29A	109.5
C2—C13—H13B	109.5	C18—C29—H29B	109.5
H13A—C13—H13B	109.5	H29A—C29—H29B	109.5
C2—C13—H13C	109.5	C18—C29—H29C	109.5
H13A—C13—H13C	109.5	H29A—C29—H29C	109.5
H13B—C13—H13C	109.5	H29B—C29—H29C	109.5
C4—C14—H14A	109.5	C20—C30—H30A	109.5
C4—C14—H14B	109.5	C20—C30—H30B	109.5
H14A—C14—H14B	109.5	H30A—C30—H30B	109.5

supplementary materials

C4—C14—H14C	109.5	C20—C30—H30C	109.5
H14A—C14—H14C	109.5	H30A—C30—H30C	109.5
H14B—C14—H14C	109.5	H30B—C30—H30C	109.5
C8—C15—H15A	109.5	C24—C31—H31A	109.5
C8—C15—H15B	109.5	C24—C31—H31B	109.5
H15A—C15—H15B	109.5	H31A—C31—H31B	109.5
C8—C15—H15C	109.5	C24—C31—H31C	109.5
H15A—C15—H15C	109.5	H31A—C31—H31C	109.5
H15B—C15—H15C	109.5	H31B—C31—H31C	109.5
C9—C16—H16A	109.5	C25—C32—H32A	109.5
C9—C16—H16B	109.5	C25—C32—H32B	109.5
H16A—C16—H16B	109.5	H32A—C32—H32B	109.5
C9—C16—H16C	109.5	C25—C32—H32C	109.5
H16A—C16—H16C	109.5	H32A—C32—H32C	109.5
H16B—C16—H16C	109.5	H32B—C32—H32C	109.5
C7—N1—S1	121.05 (17)	C23—N2—S2	120.16 (17)
C7—N1—H1N	115 (2)	C23—N2—H2N	116 (2)
S1—N1—H1N	112 (2)	S2—N2—H2N	110 (2)
O2—S1—O1	119.10 (13)	O4—S2—O3	118.80 (13)
O2—S1—N1	107.81 (12)	O4—S2—N2	108.11 (12)
O1—S1—N1	105.08 (12)	O3—S2—N2	104.97 (12)
O2—S1—C1	109.11 (12)	O4—S2—C17	109.21 (12)
O1—S1—C1	107.12 (13)	O3—S2—C17	107.64 (13)
N1—S1—C1	108.16 (12)	N2—S2—C17	107.58 (12)
C6—C1—C2—C3	0.5 (4)	C22—C17—C18—C19	0.3 (4)
S1—C1—C2—C3	178.7 (2)	S2—C17—C18—C19	-176.3 (2)
C6—C1—C2—C13	-179.9 (3)	C22—C17—C18—C29	-179.1 (3)
S1—C1—C2—C13	-1.8 (4)	S2—C17—C18—C29	4.2 (4)
C1—C2—C3—C4	-0.4 (4)	C17—C18—C19—C20	-0.6 (5)
C13—C2—C3—C4	-180.0 (3)	C29—C18—C19—C20	178.9 (3)
C2—C3—C4—C5	0.3 (4)	C18—C19—C20—C21	0.3 (5)
C2—C3—C4—C14	-179.2 (3)	C18—C19—C20—C30	179.7 (3)
C3—C4—C5—C6	-0.3 (4)	C19—C20—C21—C22	0.1 (5)
C14—C4—C5—C6	179.2 (3)	C30—C20—C21—C22	-179.2 (3)
C4—C5—C6—C1	0.5 (4)	C20—C21—C22—C17	-0.4 (5)
C2—C1—C6—C5	-0.6 (4)	C18—C17—C22—C21	0.1 (4)
S1—C1—C6—C5	-178.9 (2)	S2—C17—C22—C21	177.0 (2)
C12—C7—C8—C9	1.9 (4)	C28—C23—C24—C25	0.6 (4)
N1—C7—C8—C9	180.0 (2)	N2—C23—C24—C25	179.3 (2)
C12—C7—C8—C15	-175.4 (2)	C28—C23—C24—C31	-179.8 (2)
N1—C7—C8—C15	2.7 (4)	N2—C23—C24—C31	-1.2 (4)
C7—C8—C9—C10	-2.0 (4)	C23—C24—C25—C26	-0.1 (4)
C15—C8—C9—C10	175.2 (3)	C31—C24—C25—C26	-179.6 (3)
C7—C8—C9—C16	179.4 (3)	C23—C24—C25—C32	-179.3 (3)
C15—C8—C9—C16	-3.4 (4)	C31—C24—C25—C32	1.1 (4)
C8—C9—C10—C11	0.9 (4)	C24—C25—C26—C27	0.2 (4)
C16—C9—C10—C11	179.4 (3)	C32—C25—C26—C27	179.5 (3)
C9—C10—C11—C12	0.6 (5)	C25—C26—C27—C28	-0.9 (5)
C10—C11—C12—C7	-0.8 (4)	C26—C27—C28—C23	1.4 (4)

C8—C7—C12—C11	-0.4 (4)	C24—C23—C28—C27	-1.3 (4)
N1—C7—C12—C11	-178.5 (2)	N2—C23—C28—C27	180.0 (2)
C12—C7—N1—S1	-91.8 (3)	C28—C23—N2—S2	-77.9 (3)
C8—C7—N1—S1	90.0 (3)	C24—C23—N2—S2	103.4 (2)
C7—N1—S1—O2	-47.8 (2)	C23—N2—S2—O4	51.8 (2)
C7—N1—S1—O1	-175.8 (2)	C23—N2—S2—O3	179.5 (2)
C7—N1—S1—C1	70.1 (2)	C23—N2—S2—C17	-66.0 (2)
C6—C1—S1—O2	-154.2 (2)	C22—C17—S2—O4	152.1 (2)
C2—C1—S1—O2	27.5 (3)	C18—C17—S2—O4	-31.1 (3)
C6—C1—S1—O1	-24.0 (2)	C22—C17—S2—O3	21.9 (2)
C2—C1—S1—O1	157.7 (2)	C18—C17—S2—O3	-161.3 (2)
C6—C1—S1—N1	88.8 (2)	C22—C17—S2—N2	-90.8 (2)
C2—C1—S1—N1	-89.5 (2)	C18—C17—S2—N2	86.0 (2)

Hydrogen-bond geometry (Å, °)

<i>D</i> —H \cdots <i>A</i>	<i>D</i> —H	H \cdots <i>A</i>	<i>D</i> \cdots <i>A</i>	<i>D</i> —H \cdots <i>A</i>
N1—H1N \cdots O3	0.83 (3)	2.15 (3)	2.952 (3)	161 (3)
N2—H2N \cdots O1	0.79 (3)	2.22 (3)	2.982 (3)	164 (3)

Fig. 1

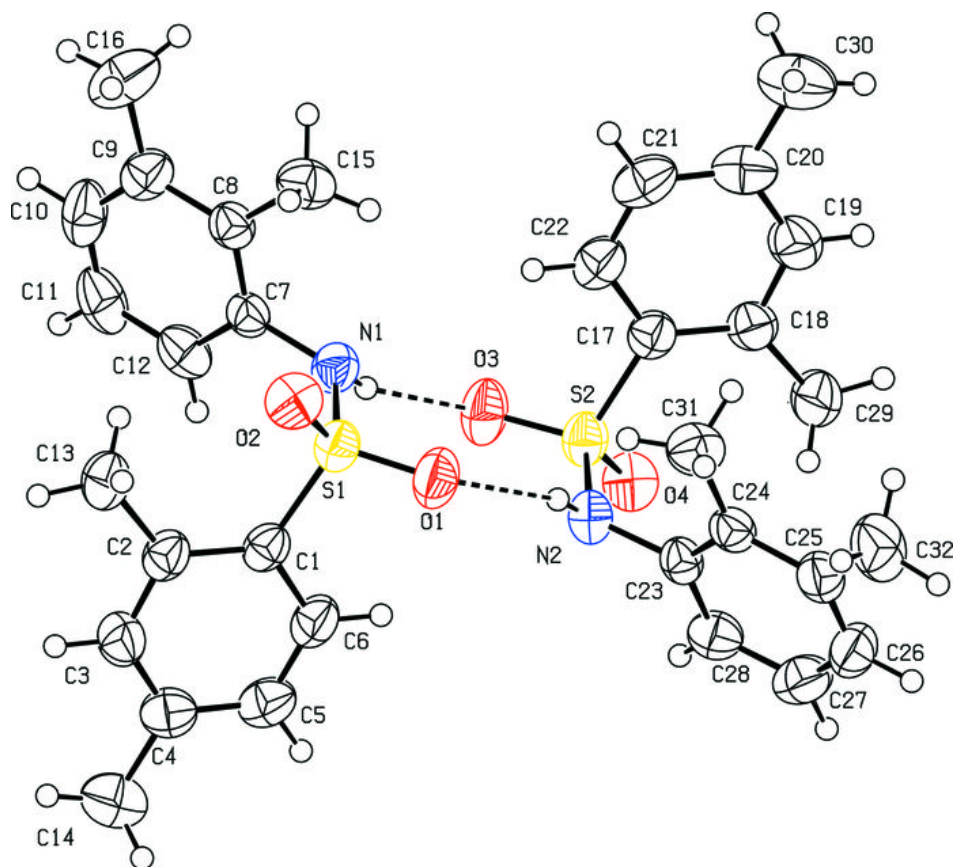


Fig. 2

